



MONITOR. OPTIMIZE. BENEFIT.

C-SITE S7



Features

- Configurable analogue front end to support different types of transducers
- Adjustable threshold and value alarms
- Adjustable measurement interval
- RSSI and LQI diagnostics
- Long life battery design
- Battery monitoring
- Encrypted data transmission
- Remote configuration via M7
- Factory set 64-bit identifier
- Easy to set-up and install to the site



Wireless specifications

Model:	Zigbee
Communications protocol:	Creowave proprietary
Data rate:	250 kbps
Frequency:	2400 – 2483.5 MHz license free ISM band (IEEE 802.15.4)
Radio security:	AES 256 bit
RF transmitter power:	Factory adjustable +10 - + 18dBm
Antenna:	+2 dBi Omni directional monopole type

Model:	LoRa
Communication protocol:	LoRaWAN
Data rate:	300 bps - 50kbps
Frequency:	867 - 869 MHz license free Sub-GHz ISM band
Radio security:	AES 128 bit
RF transmitter power:	Max. +14 dBm
Antenna:	+2 dBi Omni directional monopole type

Transducer type options

SERIAL INTERFACE	RS-485
Current output:	0-20 mA
Voltage output:	0-10 VDC
	0-3 VDC (in S7-001 and S7-002)
TEMPERATURE SENSOR	2/3-wire RTD (2-wire RTD in S7-003)
Status:	0-3 VDC low (only in S7-001 and S7-002)
	0-10 VDC high (only in S7-001 and S7-002)

Functional Specifications

Update period:	0.5 seconds to several hours
Battery pack (not in S7-003):	<ul style="list-style-type: none">• Dedicated battery pack• Rated voltage: 3.6 V• Rated capacity: 2 x 14 Ah
Battery life:	10 years at 5 min update interval
External power supply (S7-003):	max 3.9 V max

Operating Specifications

Enclosure:	IP67
Ambient temperature:	-25 ...+55°C/+60°C/+70°C
	(depend on model)
Vibration:	Tested according to IEC60770-1

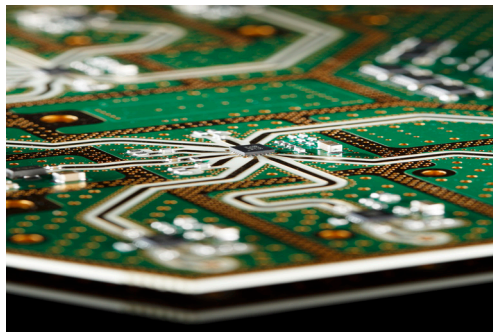
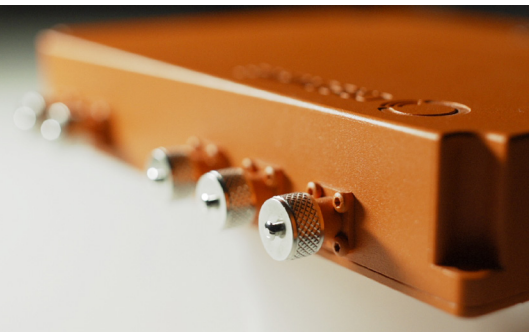
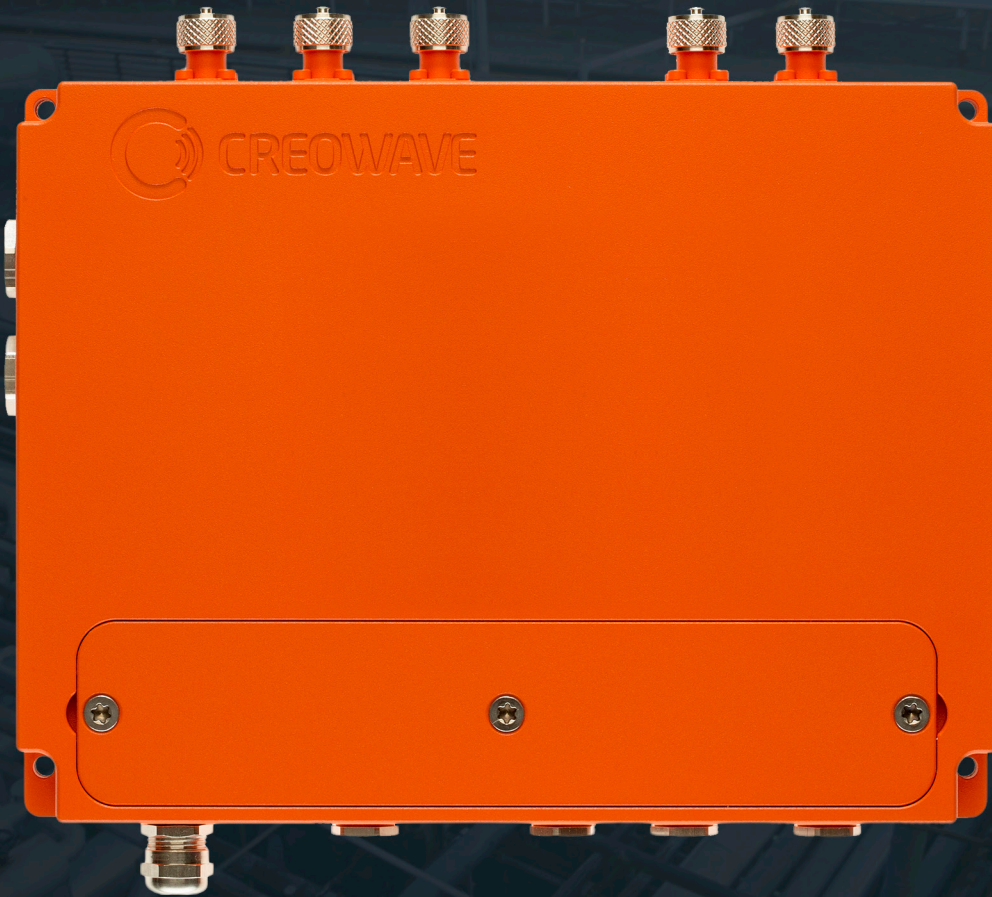
Regulatory Compliance Statement

Hazardous location certificates:	ATEX/IECEx certified to II 1 G Ex ia IIC T4 Ga and II 2G Ex ib IIC T4
cMETus certified to	CL 1 ZONE 1 AEx ib IIC T4 Gb (UL, CSA, CAN) listing no. E114294.
EMC conformity standards:	EN61326 Class A
R&TTE conformity standards:	ETSI EN 300 328 ETSI EN 301 489-17 EN61010-1
Regulation conformity of the wireless model:	FCC approval, IC approval

Product Codes

CRE-00023	C-site S7-002 ia Zx with Binder Connector	short range
CRE-00027	C-site S7-002 ia Lx with Binder Connector	long range
CRE-00004	C-site S7-002 ib with Binder Connector	short range
CRE-00026	C-site S7-003 ia Zx with External Power	short range
CRE-00028	C-site S7-003 ia Lx with External Power	long range
CRE-00020	C-site S7-003 ib with External Power	short range

For more models, please contact sales@creowave.com



MONITOR. OPTIMIZE. BENEFIT.

C-SITE R7



Features

- Multiple network infrastructures supported
- Internal diagnostics
- Communications diagnostics, RSSI and LQI
- Sensor network data storage in case that data transmission is lost
- Change and transmit of new calibration files of transducers to S7 units
- Easy to set-up and install to the site

Wireless specifications

Wireless communications interface

DOWNLINK Zigbee

Frequency band:	2405 - 2480 MHz (IEEE 802.15.4)
Communication protocol:	Creowave proprietary
Link span:	> 600 m free space, antenna gain +4dBi
Update period:	0.5 seconds to several hours
Network size:	99 sensor units
Radio security:	AES 256-bit encrypted
RF transmitter power:	Factory adjustable +10 - + 18dBm

UPLINK Zigbee

Options:	• Cellular 3G / 4G • Wi-Fi 802.11a/b/g/h
TX output power:	According to national regulations Absolute max. restricted to 2W

DOWNLINK LoRa

Frequency band:	867 - 869 MHz
Communication protocol:	LoRaWAN
Link span:	max 20km free space, antenna gain +6dBi (omnidirectional)
Update period:	60 seconds to several hours
Radio security:	AES 128-bit encrypted
RF transmitter power:	Max. 20dBm

UPLINK LoRa

Options:	• Cellular 3G / 4G • Wi-Fi 802.11a/b/g/h
TX output power:	According to national regulations Absolute max. restricted to 2W

Wired communication interface

Ethernet:	10/100 Base-TX
Serial communication:	2 x RS-485

Functional specifications

Power supply:	SELV +12VDC/2.5A
Power consumption:	25 W max

Regulatory Compliance Statement

Hazardous location certificates:	ATEX/IECEX certified II 2G Ex mb (ib) IIC T4
cMETus certified to:	CL 1 ZONE 1 AEx e mb [ib] IIC T4 Gb (UL, CSA, CAN) listing no. E114307.
EMC conformity standards:	EN61326 Class A
R&TTE conformity standards:	ETSI EN 300 328 ETSI EN 301 489-17 EN 61010-1
Regulation conformity of the wireless model:	FCC approval, IC approval

Operating Specifications

Ambient Temperature:	-25... +55°C
Environmental:	IP67, humidity 5-95%
Vibration:	Tested according to IEC60770-1

Product Codes

CRE-00008	C-site R7-303	R7 with WLAN and 3G	
CRE-00047	C-site R7-LoRa	R7 with WLAN	(long range)

For more models, please contact sales@creowave.com